

GLIOMATCH

The malignant Glioma immuno-oncology matchmaker



gliomatch.eu



€12.59

million of
funding

5

years of
duration

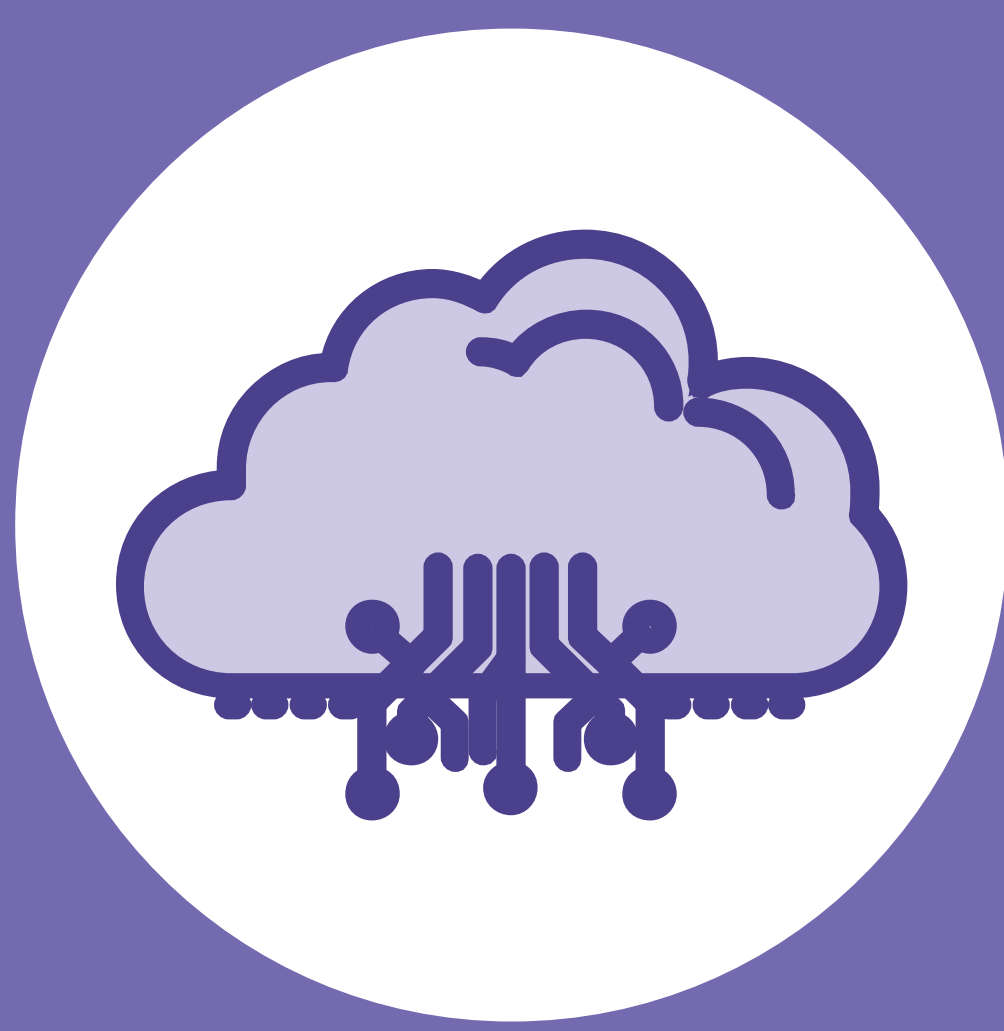
14

partners
participating

8

clinical centres
conducting trials

Key innovations



MRI
radio-multimomics
digital hub



State-of-the-art
spatio-temporal
model

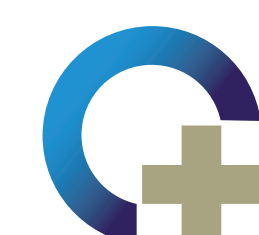


Extensive
UNCAN-compatible
data lake

Consortium



Maastricht University



Oslo
universitetssykehus

SJD

Sant Joan de Déu
Fundació de Recerca



UPPSALA
UNIVERSITET



Aspect
Analytics



TIMELEX

accelopment
takes you further



THE UNIVERSITY
of EDINBURGH



Funded by the European Union. Views and opinions expressed are however those of the author(s) only and do not necessarily reflect those of the European Union or the European Health and Digital Executive Agency (HaDEA). Neither the European Union nor the granting authority can be held responsible for them.