

HORIZON-MISS-2023-CANCER-01-01

GLIOMATCH

Project No. 101136670

The malignant Glioma immuno-oncology matchmaker: towards data-driven precision medicine using spatially resolved radio-multiomics

Deliverable 7.4

Common video and/or a common cluster brochure

WP 7 – Stakeholder involvement, dissemination and exploitation, including communication

Version 1.0

Authors	Alexandra Furio / Eva Avilla Royo (accelCH)
Lead participant	accelCH
Delivery date	13 January 2025
Dissemination level	PU = Public
Type	DEC = Websites, patent filings, videos, etc.



Funded by the European Union. Views and opinions expressed are however those of the author(s) only and do not necessarily reflect those of the European Union or the European Health and Digital Executive Agency (HaDEA). Neither the European Union nor the granting authority can be held responsible for them.



This work is supported by Innovate UK [grant number 10113516].



The project is also supported by the Swiss State Secretariat for Education, Research and Innovation (SERI) under the contract number 23.00607.

Revision history

Author(s)	Description	Date
Kalliopi Thanopoulou (MULTIR)	Deliverable draft	2 December 2024
All partners during and after working group meeting	Revision 1	17 December 2024
Kalliopi Thanopoulou (MULTIR)	Revision 2	24 December 2024
Alexandra Furio (accelCH), Eva Avilla Royo (accelCH)	Formatting and formal check	08 January 2025
Frederik De Smet (KUL)	Final version	09 January 2025

Contents

Revision history	2
Understanding (Tumour-Host Interactions) Cluster projects	4
Abbreviations	4
Executive summary	5
1 Introduction	6
2 Brochure	6
3 Video	7
4 Next steps	7
5 Conclusion	7
6 Annex	8

Understanding (Tumour-Host Interactions) Cluster projects

Project	Title	Project Number
ARTURO	Assessing the role of intratumoural microbiota in therapy responses using patient-derived tumour-on-chip	101136464
GLIOMATCH	The malignant Glioma immuno-oncology matchmaker: towards data-driven precision medicine using spatially resolved radio-multiomics	101136670
HIT-GLIO	Targeting tumour-host interactions in paediatric malignant gliomas to reinvigorate immunity and improve radio- and immunotherapy efficacy	101136835
MULTIR	MULTi-Tumour based prediction and manipulation of Immune Response	101136926
SPACETIME	SPAtial Analysis of Cancer Evolution in the Tumour Immune MicroEnvironment	101136552
THRIVE	Tumour-host interactions in liver cancer of childhood and adults	101136622

Abbreviations

Abbreviation	Term
D	Deliverable
EU	European Union
RIA	Research and Innovation Action
U-THI-Clust	Understanding Tumour-Host Interactions Cluster
WG	Working Group

Executive summary

Background

Deliverable D7.4, titled “**Common Video and/or Common Cluster Brochure,**” is part of Work Package 7: **Stakeholder Involvement, Dissemination, and Exploitation, Including Communication.** This deliverable was developed collaboratively by the projects within the **Understanding Tumour-Host Interactions Cluster (U-THI-Clust).** It details the creation of an informative cluster brochure and video, designed to promote the cluster's mission and activities.

Objectives

The primary objective of this deliverable is to document the development of a joint cluster video and brochure to raise awareness about the U-THI-Clust projects and their collective role within the cluster. Additionally, it demonstrates how these communication tools contribute to the cluster's overarching goal of unified messaging across projects, aligning with the EU Cancer Mission's objectives.

Methodology and implementation

The development of the cluster video and brochure was carried out by the **Communication and Dissemination Working Group (WG2)** within U-THI-Clust. This process was led by MULTIR, the organisation responsible for WG2, with input and feedback from all WG2 members, representing each cluster project. The collaboration ensured that the materials reflected the collective vision of the cluster.

Outcomes

The cluster created a video and brochure to enhance its outreach efforts. The brochure introduces the cluster's mission and projects, combining concise text, engaging visuals, and digital tools such as QR codes for increased accessibility. The video highlights both the scientific and societal aspects of the cluster's work and includes features to ensure accessibility for individuals with visual or hearing impairments. Both materials showcase the cluster's emphasis on collaboration and innovation within the framework of the EU Cancer Mission.

Impact

The video and brochure aim to support the U-THI-Clust projects' efforts to advance cancer research by studying tumour-host interactions, fostering collaboration, and contributing to improved cancer diagnosis, treatment, and patient quality of life. By distributing these materials through the communication channels of all six projects, the cluster strengthens its visibility and role in promoting innovative cancer research.

Next steps

The materials will be published on the websites of all six projects and shared through their respective communication channels, including online platforms, events, and social media. These dissemination efforts will maximise the cluster's reach and impact. Future updates will reflect the cluster's ongoing progress and activities.

1 Introduction

The **Understanding Tumour-Host Interactions Cluster (U-THI-Clust)** is a collaborative initiative established to support the European Commission’s **Mission Cancer** objective: *Understanding Cancer*. U-THI-Clust brings together six EU-funded **Research and Innovation Action (RIA)** projects—ARTURO, GLIOMATCH, HIT-GLIO, MULTIR, THRIVE, and SPACETIME—to address shared scientific challenges, optimise synergies, and contribute to the EU Cancer Mission’s transformative goals while minimising redundant efforts.

To achieve these aims, the cluster’s work is organised into six strands, each led by a dedicated **Working Group (WG)** that facilitates its implementation.

Table 1: Understanding (tumour-host interactions) cluster working groups

Working Group (WG)	Title
WG1	Data Management and Sharing
WG2	Communication and Dissemination
WG3	Research and Innovation
WG4	Addressing Inequalities
WG5	Citizen and Patient Engagement
WG6	Annual Cluster Meetings

The **Communication and Dissemination Working Group (WG2)**, led by MULTIR in collaboration with all cluster members, has developed a unified communication strategy. This strategy aims to establish a consistent cluster identity, raise awareness of the cluster’s activities, and effectively disseminate research outcomes. These efforts are guided by the cluster’s common deliverable D7.2, “Common Work Plan for Scientific Collaboration under the Understanding Tumour-Host Interactions Cluster,” which was prepared by WG3: Research and Innovation.

To engage a wide range of stakeholders, including researchers, policymakers, funding organisations, patients, and caregivers, WG2 created a **cluster video and brochure**. These tools are designed to effectively communicate the cluster’s mission and activities, using accessible language and engaging visuals to ensure they reach diverse audiences.

The video and brochure are part of a broader communication plan, which includes:

- **Cluster Page:** Each project’s website will feature a dedicated section outlining the cluster’s objectives and providing links to partner projects.
- **Regular Updates:** Social media posts, newsletters, and press releases will be shared across the projects’ channels to maintain consistent communication.
- **Workshops and Events:** Initiatives will be organised to bring stakeholders together to explore topics such as cancer diagnostics, prevention, and improving patient quality of life, e.g. an EU-Joint workshop organised by THRIVE.

By presenting a cohesive narrative, the video and brochure strengthen the cluster’s ability to connect with its audience, promote collaboration, and amplify its contributions to advancing cancer research.

2 Brochure

The U-THI-Clust brochure was developed as an informative and visually engaging resource that introduces the cluster’s mission and its six research projects. Its primary objective is to provide a concise yet compelling overview of the cluster’s goals and expected scientific outcomes, targeting diverse audiences at in-person events and through digital platforms.

The brochure’s design focuses on clarity and impact, incorporating bold typography, vibrant visuals, and high-contrast colours to attract attention. Prominently displayed logos of the cluster and its six projects reinforce brand identity and recognition. The written content highlights the cluster’s mission, summarises its focus on tumour-host interactions, and briefly outlines the six projects’ individual contributions to advancing cancer research. Section 6.1 shows screenshots of the brochure pages.

QR codes are embedded to direct readers to detailed project information on the respective websites, while social media handles encourage ongoing engagement. The brochure also includes transparent information on the funding sources that support the cluster's activities.

This resource is designed for both print and digital distribution. The printed version is ideal for conferences, workshops, and networking events, where it can facilitate new collaborations and increase awareness of the cluster's work. The digital version can be shared via email, social media, and newsletters, enabling broader dissemination to a wider audience.

By consolidating vital information into a compact and visually engaging format, the U-THI-Clust brochure effectively serves as a tool for promoting awareness, fostering collaboration, and strengthening connections with stakeholders.

3 Video

The U-THI-Clust video provides an emotive and visually engaging narrative of the cluster's mission and impact. It depicts the real-life challenges faced by cancer patients—children and adults alike—alongside the efforts of researchers striving for breakthroughs and the compassion of caregivers supporting patients through their journeys.

Aligned with the EU Cancer Mission initiative, the video introduces the six cluster projects, each with its specific goals. Collectively, these projects aim to deepen the understanding of cancer biology by exploring how tumours interact with the human body and the surrounding environment. This collaborative approach seeks to improve cancer diagnosis, treatment, and quality of life for patients. Accessibility is a key feature of the video. It incorporates clear audio narration and visually descriptive elements, ensuring it is accessible to individuals with visual or hearing impairments. See section 6.2 for screenshots of the video frames.

The video will be shared widely through the projects' websites, social media channels, and stakeholder events. This multi-platform dissemination strategy ensures the video reaches diverse audiences, maximising its impact and engagement potential.

4 Next steps

The U-THI-Clust cluster will use the common video and brochure as central tools for communication and engagement. These materials will feature prominently in the cluster's dissemination activities, including presentations at conferences, workshops, and public events, where they will highlight the cluster's objectives and research outcomes.

Additionally, the video and brochure will be prominently displayed on the cluster page of each project's website, ensuring easy access for a broad audience, including patients, researchers, policymakers, and potential collaborators. The cluster will also leverage online platforms, social media, and events to maximise the materials' reach.

As the cluster evolves, updated versions of the video and brochure will be produced to reflect progress and new developments, ensuring the resources remain current and impactful.

5 Conclusion

The creation of the U-THI-Clust video and brochure exemplifies the cluster's collaborative approach to communication. The brochure serves as an informative and visually appealing resource, providing insights into the cluster's goals and the contributions of its six projects. The video offers a dynamic and accessible introduction to the cluster's mission, emphasising its commitment to advancing cancer research.

Both deliverables incorporate the cluster's visual identity, including logos, fonts, and imagery, ensuring a cohesive and engaging presentation. A digital version of the brochure minimises environmental impact, while printed copies are produced using environmentally conscious practices.

Together, these tools enhance the cluster's ability to connect with stakeholders, promote collaboration, and amplify its role in advancing the understanding of tumour-host interactions.

6 Annex

6.1 Brochure



Understanding
**tumour-host
interactions**

Cluster



Cancer Mission

The EU Cancer Mission aims to tackle the growing challenge of cancer, which affects 2.7 million people and claims 1.3 million lives annually in the EU. It focuses on strategic research and innovation, improving the quality of life for patients and their families and strengthening collaboration within the cancer community to accelerate progress in cancer prevention, diagnosis and treatment.

GOAL

Improve the lives of more than 3 million people by 2030.

Cluster Mission

The "**Understanding (tissue-host interactions)**" **Cluster** comprises six projects under the EU Cancer Mission's "**Understanding Cancer**" objective.

These projects explore genetic risks and environmental factors in cancer development.

By fostering collaboration, they contribute to **Europe's Beating Cancer Plan**, generating insights to advance prevention, detection, and treatment strategies, aligning research with public health policies.



The 4 Mission objectives include:

- Understanding of cancer
- Prevention and early detection
- Diagnosis and treatment
- Quality of life for patients and their families

The **malignant Glioma** immuno-oncology matchmaker: towards data-driven precision medicine using spatially resolved radio-multiomics.

GLIOMATCH



MULTIR
MULTi-Tumour based prediction and manipulation of Immune Response.



Targeting tumour-host interactions in **paediatric malignant gliomas** to reinvigorate immunity and improve radio- and immunotherapy efficacy.

HIT-GLIO



Fact Sheet



THRIVE
Tumour-host interactions in **liver cancer** of childhood and adults.

SPATIAL ANALYSIS of Cancer Evolution in the Tumour Immune MicroEnvironment.

SPACETIME



ARTURO
Assessing the role of **intratumoral** microbiota in therapy responses using patient-derived tumor-on-chip.



Project Name:
**Targeting tumour-host
 interactions in paediatric malignant gliomas
 to reinvigorate immunity and improve radio-
 and immunotherapy efficacy**

Project #101136835



Start date:

1 December **2023**

End date:

30 November **2027**

Type of cancer

Paediatric high-grade glioma

PARTNERS



Research objectives

HIT-GLIO aims to dissect tumour-host interactions in malignant paediatric gliomas with single-cell omics and multi-modal imaging, and develop strategies to enhance immunotherapy and radiotherapy response. We use patient's samples, organoids, cellular and mouse models to unravel defects of anti-tumour immunity, identify therapeutic targets, and test innovative technologies targeting tumour-host interactions to boost immunotherapy in these lethal childhood diseases. Our innovative therapeutic approaches include nano-particles and interfering peptide technologies, as well as dual CAR T cells and hypoxia-activated tools to modulate tumour microenvironment. In parallel, we focus on assessing neurodevelopmental alterations and psychological consequences of disease and foster psychological approaches to increase quality-of-life of affected children and their caregivers.

Expected impact

We envision to broaden our knowledge of tumour-host interactions in paediatric malignant gliomas and validate innovative approaches to boost immunotherapy (dual CAR T cell strategy or targeting immunosuppressive myeloid cells) or radiotherapy (targeting hypoxic tumour fraction) efficacy.



@Hit Glio 

@HIT GLIO 



hit-glio.eu



Research objectives

THRIVE seeks to uncover critical tumour-host interactions to understand cancer predisposition, onset, progression, and biomarkers of therapy response and resistance, aiming for affordable, tailored, and socially accepted treatments. Specifically, THRIVE will:

- Advance knowledge of liver cancer predisposition, creating prediction tools for at-risk populations.
- Expand the liver cancer atlas for childhood and adult patients using technologies like single-cell sequencing and spatial transcriptomics.
- Analyse the intratumoral microbiome and its link to immune subtypes.
- Identify biomarkers to enable precision oncology and affordable therapies.
- Develop AI tools for molecular classification and therapy response prediction.
- Enhance drug testing platforms using Patient-Derived Organoids and mouse models.
- Propose novel, socially acceptable drug combinations.
- Integrate findings with public datasets and influence policies through clinical guidelines.

Expected impact

THRIVE is a pioneering EU initiative that aims to enhance the outcome of paediatric & adult liver cancer patients by: 1. advancing the understanding of the disease; 2. Identifying biomarkers for current therapies; 3. developing novel treatments to overcome resistance.



@THRIVE_LiverCan



@THRIVE LIVER CANCER



thrive-liver-cancer.eu



GLIOMATCH



Project Name:
**The malignant Glioma immuno-oncology
 matchmaker: towards data-driven precision
 medicine using spatially resolved
 radio-miomics**

Project #101136670



Start date:
 1 January **2024**
 End date:
 31 December **2028**

Type of cancer
Glioblastoma
Paediatric high-grade glioma



PARTNERS

KU LEUVEN



CANCER
 PATIENTS
 EUROPE



hhu
 Heinrich Heine
 Universität Düsseldorf



TIMELEX

accelopment



Erasmus MC
 University Medical Center
 Erasmus

RAMBAN
 Health Care Campus

SJD
 Sant Joan de Déu
 Fundació de Recerca



Research objectives

The GLIOMATCH project is focused on improving clinical outcomes for patients with glioblastoma (GBM) and paediatric high-grade glioma (pHGG) by advancing personalised immunotherapy. Through an innovative integration of spatially resolved, multi-layered tissue mapping and non-invasive MRI imaging, GLIOMATCH aims to enable precise patient stratification for tailored immunotherapy. By developing a comprehensive MRI Radio-multiomics hub, GLIOMATCH will provide clinicians with a powerful tool to match patients with the most effective therapies and monitor treatment progress.

Expected impact

GLIOMATCH expects to advance personalised treatment approaches for GBM/pHGG by creating data-driven models based on the largest-ever cohort of GBM/pHGG patients treated with immuno-oncology. These models will enhance clinical decision-making, improve patient stratification, and suggest novel treatments. GLIOMATCH will also establish a UNCAN-compatible data lake, allowing continuous learning and refinement of machine learning models for optimised patient care.



@GLIOMATCH 

@GLIOMATCH 



gliomatch.eu





Project Name:
**MULTi-Tumour based prediction
 and manipulation of Immune
 Response**

Project #101136926



Start date:

1 January **2024**

End date:

31 December **2027**

Type of cancer

Melanoma

Lung cancer

Bladder cancer

PARTNERS

 **Inserm**



 **University Medicine Essen**
 University Hospital

 **mosaiques
 diagnostics**



 **Radboudumc**
 university medical center



 **University of
 Zurich**

 **AARHUS UNIVERSITY**

 **MEDICAL UNIVERSITY
 OF VIENNA**



 **EXELIXIS**
 Oncology
 Management
 & Communication

 **eticas**
 FOUNDATION

 **NIPH**
 Norwegian Institute of Public Health

 **SORBONNE
 UNIVERSITE**

 **McGill
 UNIVERSITY**

Research objectives

The MULTIR project seeks to unravel the complexities of tumour-host interactions across various tumour types, integrating clinical, molecular, and environmental factors. It investigates immune signatures, microenvironmental influences, and social, ethnic, and cultural dimensions to understand their impact on cancer progression and treatment response. Advanced technologies for omics data generation, bioinformatics, AI, and mechanistic modelling will be employed to identify biomarkers and molecular processes influencing therapy success. A central aim is to transition from animal models to more relevant systems, supported by collaborations with databasing and cybersecurity experts to ensure secure, EU-compliant data sharing and privacy.

Expected impact

MULTIR aims to deliver a European healthcare data space, complete with advanced digital tools for data analysis, modelling, and decentralised governance. The project aspires to improve therapy strategies for immune-rich cancers like bladder, lung, and melanoma by identifying actionable targets and biomarkers. Involvement of patient organisations ensures alignment with personalised treatment needs, paving the way for transformative cancer care.



@MultirEU



@MULTIR EU PROJECT



@multirproject



multir.eu





Project Name:
**Assessing the role of intratumoral
 microbiota in therapy responses using
 patient-derived tumour-on-chip**

Project #101136464



Start date:
 1 July **2024**

End date:
 30 June **2028**

Type of cancer
Lung cancer
Breast cancer

PARTNERS



Research objectives

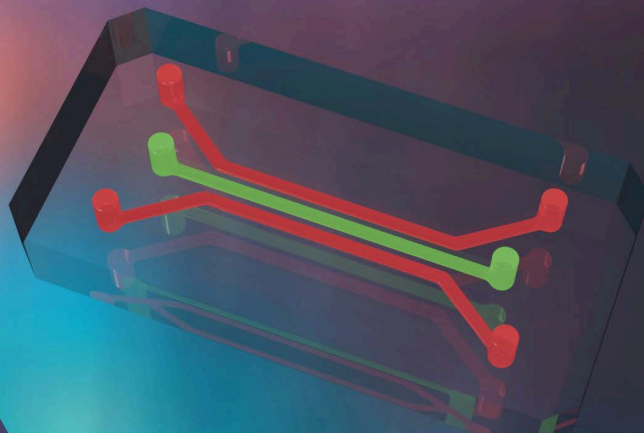
Project ARTURO aims to advance cancer precision medicine by deciphering the role of patient-derived bacteria, postbiotics, and extracellular vesicles in tumour ecosystem behaviors and drug responses. Using innovative 3D tumour-on-chip models, multi-omics analysis, and computational methods, the project will gain deep insights into tumour-host interactions, focusing on non-small cell lung cancer and invasive lobular breast cancer.

Expected impact

ARTURO's results are expected to lead to a better understanding of microbiota-driven processes underlying tumour progression, helping to conceive novel microbiota-based intervention strategies.

The project will also address end-users' perspectives and ethical considerations to facilitate the translation of ARTURO's innovations to clinical practice and inform evidence-based health policies.

By leveraging cutting-edge in vitro models and computational approaches, ARTURO seeks to make significant contributions to cancer precision medicine and diagnostics, ultimately benefiting patients with hard-to-treat cancer subtypes.



@ARTURO PROJECT 

@arturo.project 



arturoproject.eu





SPACETIME
Spatially Decoding Lung Cancer



Project Name:
**SPatial Analysis of Cancer Evolution
in the Tumour Immune
MicroEnvironment**

Project #101136552



Start date:
1 August **2024**

End date:
31 July **2029**

Type of cancer
Lung cancer

PARTNERS

 Amsterdam UMC

 HELMHOLTZ MUNICH

 Stockholm
University

 Leids Universitair
Medisch Centrum

 Cima
Universidad
de Navarra

 Universiteit
Utrecht

 NIB

 PangmaBioTech

 UNIWERSYTET
WARSZAWSKI

 KTH
KTH

 Universidad
de Navarra

 KNL
integraal
kankercentrum
Nederland

 LUNG
Europe

 ETOP-IBCSG
PARTNERS FOUNDATION

 ISTITUTO NAZIONALE TUMORI
IRCCS - Fondazione Pascale

Research objectives

SPACETIME (SPatial Analysis of Cancer Evolution in the Tumour Immune MicroEnvironment) aims to better understand the development and progression of non-small cell lung cancer (NSCLC) by studying the interactions of tumour cells with other cells, such as immune cells, within the growing tumour. Specifically, we will use advanced spatial technologies to unravel the spatial composition and organisation of the diverse cell types within the tumour microenvironment and study their evolution over time. Advanced computer modelling will then allow us to identify potential predictive biomarkers and propose existing and novel therapeutic interventions to overcome specific immune resistance mechanisms.



@SPACETIME_EU 

@SPACETIME_EU Project 

Expected impact

- 1 - Scientific understanding of NSCLC to advance future cancer research.
- 2 - Development of a clinically relevant predictive test for personalised therapy selection in NSCLC patients to improve survival and reduce unnecessary exposure to ineffective treatments and their associated side effects.
- 3 - Providing prevention measures which will help inform health policies, allowing policymakers to create effective prevention strategies.
- 4 - Facilitating early detection of lung cancer, by informing clinicians about the likelihood of an early-stage tumour developing immune resistance in the future, which can help determine the urgency for early intervention.



spacetimeproject.eu





Understanding tumour-host interactions Cluster

Funded by the European Union. Views and opinions expressed are however those of the author(s) only and do not necessarily reflect those of the European Union or the European Health and Digital Executive Agency (HaDEA). Neither the European Union nor the granting authority can be held responsible for them.



Funded by
the European Union



Swiss Confederation
Federal Department of Economic Affairs,
Education and Research EAER
State Secretariat for Education,
Research and Innovation SERI

6.2 Screenshots of video

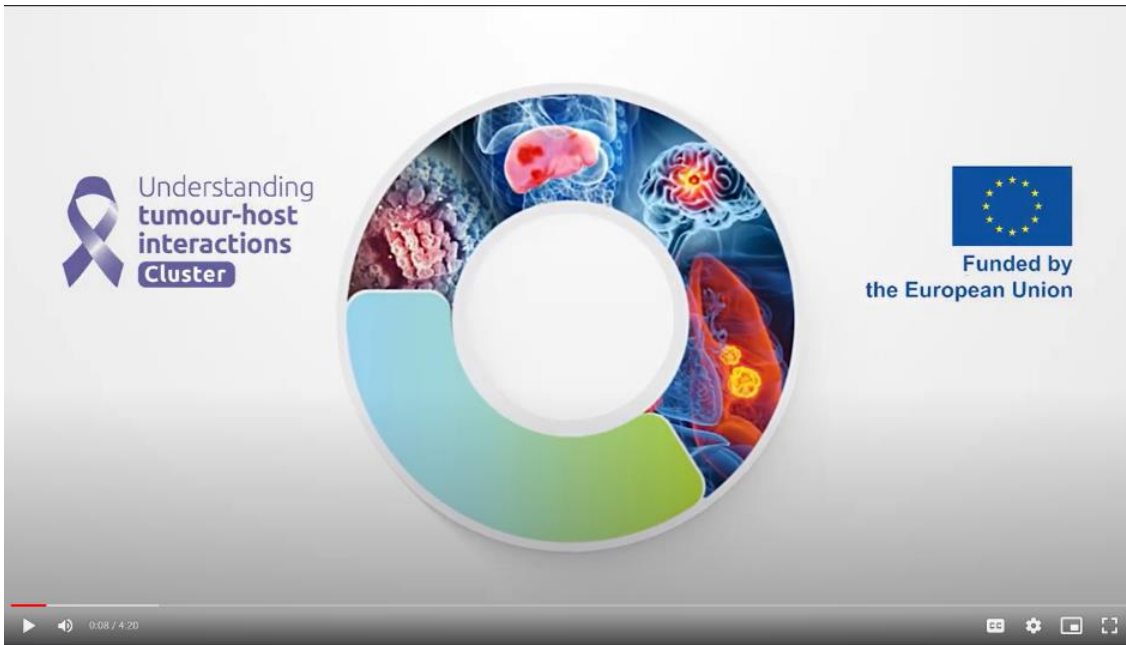


Figure 1 The 'Understanding (Tumour-Host Interactions)' Cluster opening scene

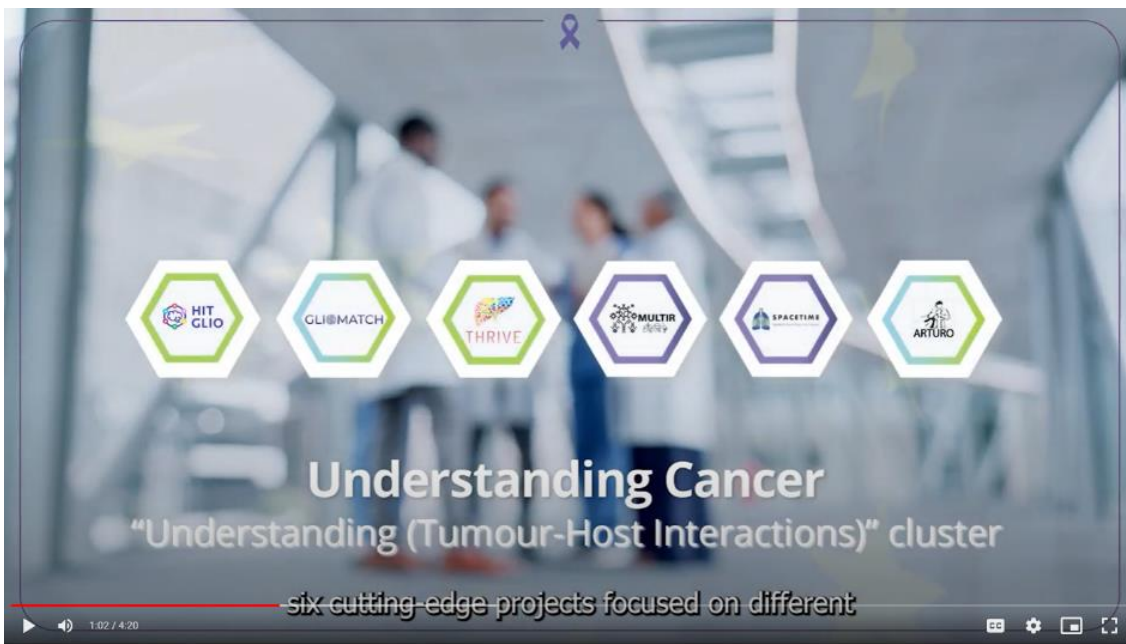


Figure 2 The 'Understanding (Tumour-Host Interactions)' Cluster projects

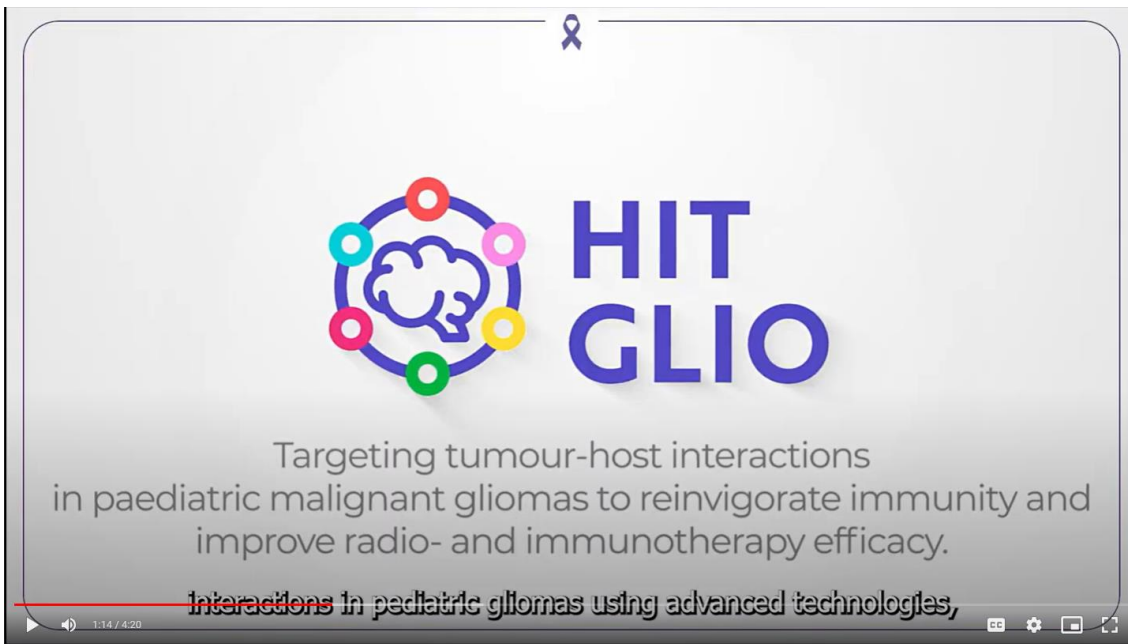


Figure 3 Presentation of the HIT-GLIO project

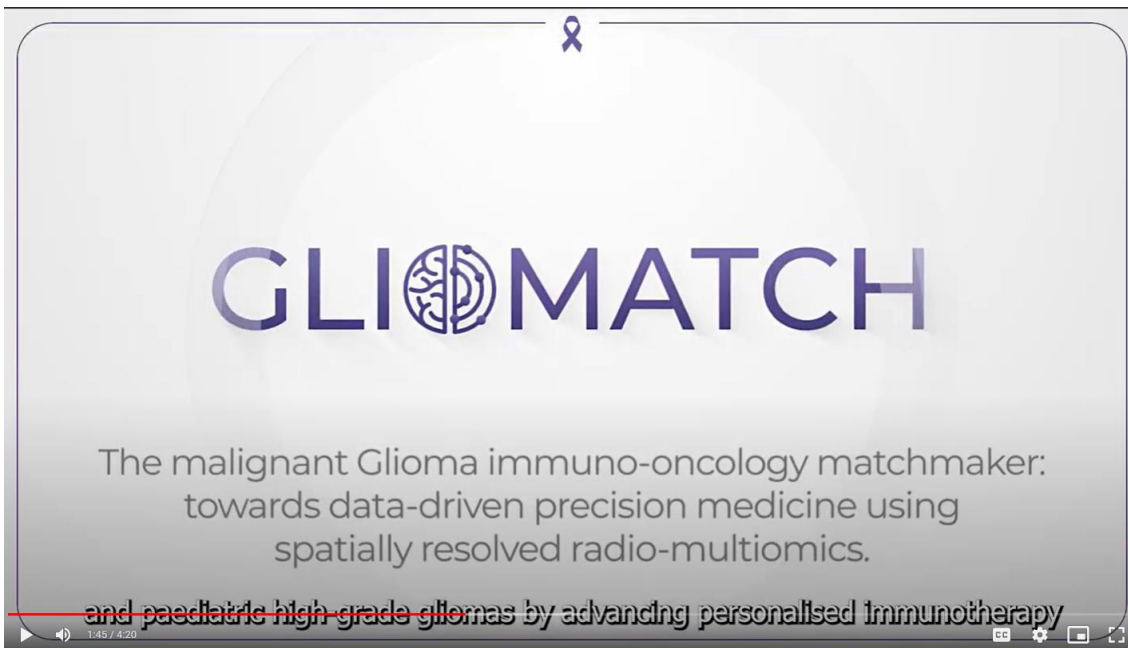


Figure 4 Presentation of the GLIOMATCH project



Figure 5 Presentation of the THRIVE project

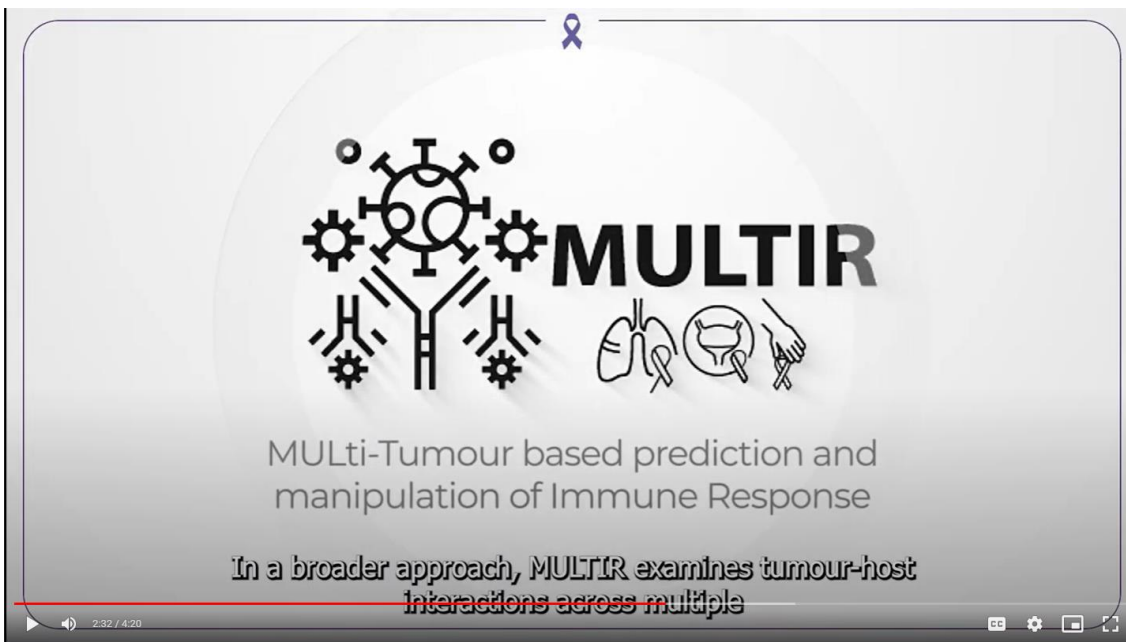


Figure 6 Presentation of the MULTIR project

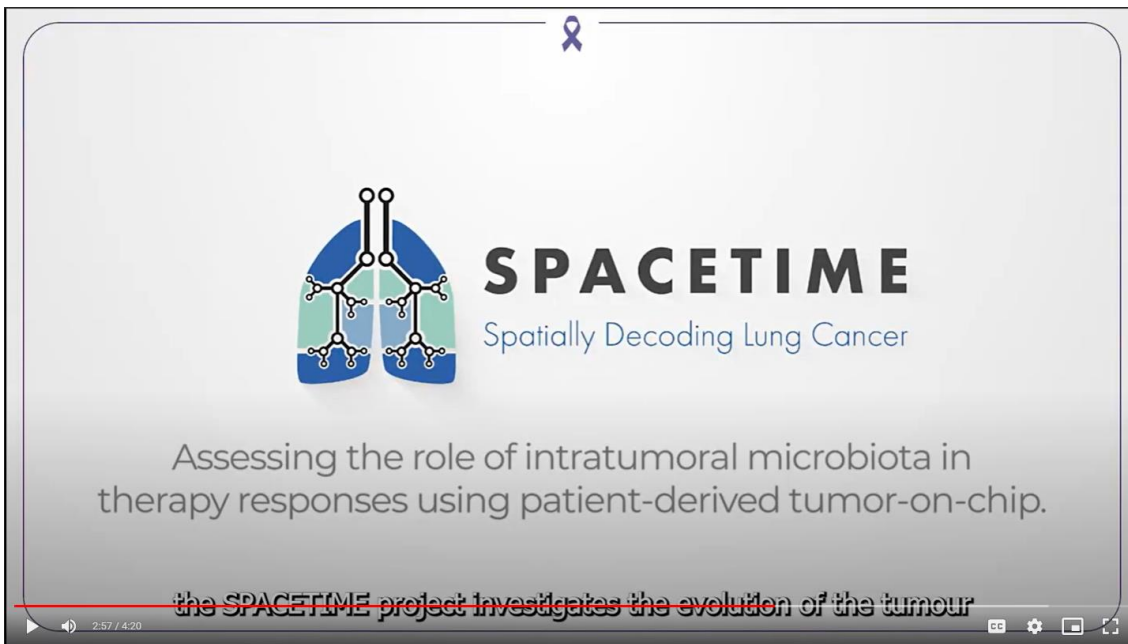


Figure 7 Presentation of the SPACETIME project

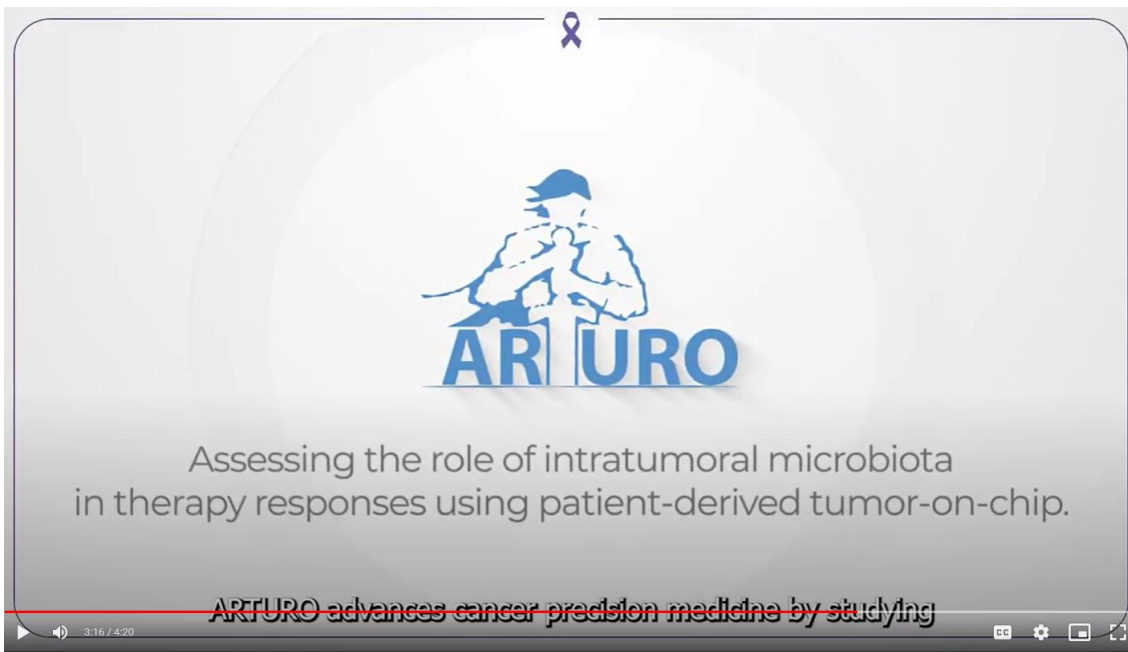


Figure 8 Presentation of the ARTURO project